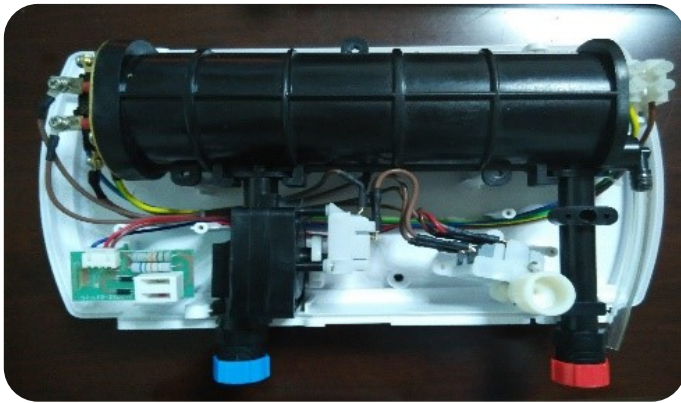


# HYDROMAX

ENERGY EFFICIENT HEAT PUMP WATER HEATER

## TANKLESS INSTANT WATER HEATER

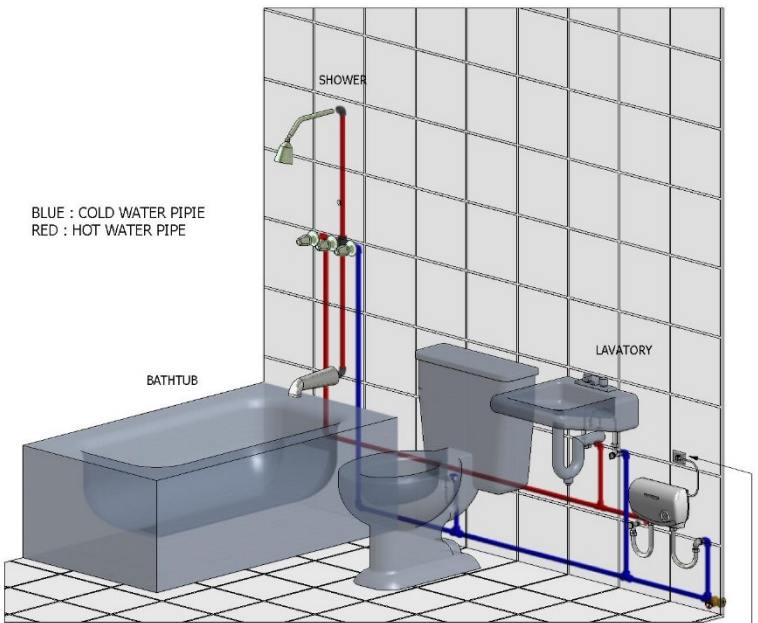


- **ADVANTAGE OF HYDROMAX INSTANT HEATER**
- **FULLY AUTOMATIC WITH PDFS FLOW SENSOR** – The heater will automatically cut-off after shutting down the water supply valve **either before and after the heater** with out turning off the power supply. It uses a highly sensitive advance Pressure Differential Switch to turn off the heater on both Singlepoint and Multipoint model. 2 x more effective and durable than ordinary pressure and flow switch.
- **ANTI SCALDING DEVICE** –Automatically turn-off the power to avoid scalding.
- **HIGH DENSITY COMPOSITE PLASTIC HEATING CHAMBER** – Tested and proven to withstand highly corrosive water supply for 15 years. Its very easy to clean and maintain. Very economical and safer. (Not an electrical conductor with a very low thermal conductivity)
- **DUAL COIL HEATING ELEMENT** – Low, Medium, High Settings to minimized electrical consumption.
- **AUTOMATIC PRESSURE RELIEF VALVE** – It release automatically too much pressure on the system incase of emergency situations.



### Multipoint

HOT & COLD WATER SUPPLY FOR WHOLE ROOM

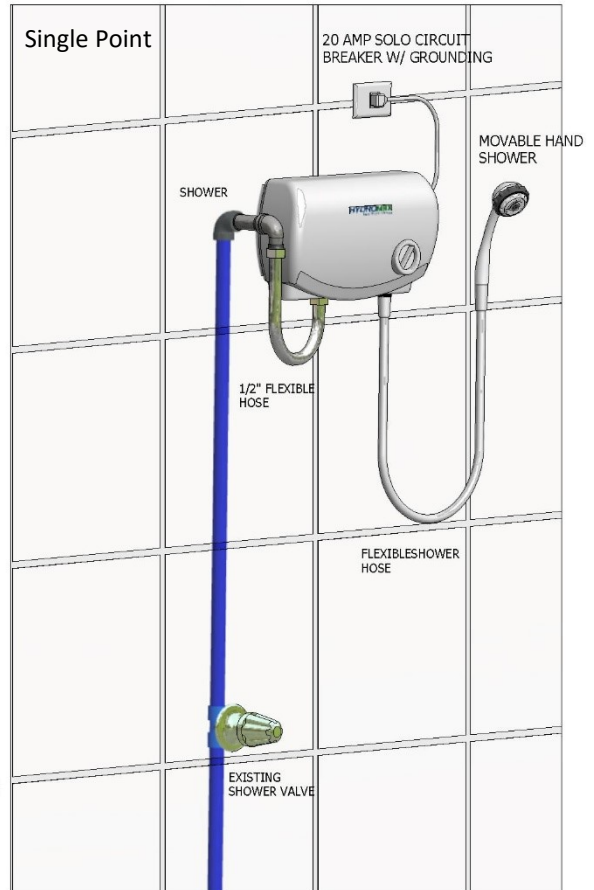


BLUE : COLD WATER PIPE  
RED : HOT WATER PIPE

HOT & COLD WATER SUPPLY FOR WHOLE ROOM

30 AMP SOLO CIRCUIT  
BREAKER W/ GROUNDING

### Single Point



20 AMP SOLO CIRCUIT  
BREAKER W/ GROUNDING

MOVABLE HAND  
SHOWER

SHOWER

1/2" FLEXIBLE  
HOSE

FLEXIBLE SHOWER  
HOSE

EXISTING  
SHOWER VALVE