



# PRODUCT CATALOG

TILES AND WOOD CLADDING

2024



**SANTECO CONSTRUCTION**  
Supplies and Services

# TRANSFORM YOUR SPACE: ELEVATE WITH TILES AND WOOD CLADDING

**Address:**

#81, UNIT A, F. BALAGTAS ST.,  
PARANG, MARIKINA CITY, 1809

**Contact No.:**

(02) 7956-5078

**Email:**

info@santecoconstruction.net  
michaeldsanteco@gmail.com

**Social Media:**

*WEBSITE*

[www.santecoconstruction.net/](http://www.santecoconstruction.net/)

*FACEBOOK*

[www.facebook.com/santeco.construction](https://www.facebook.com/santeco.construction)

*INSTAGRAM*

[www.instagram.com/santeco.construction](https://www.instagram.com/santeco.construction)

*LINKEDIN*

[www.linkedin.com/in/santeco-construction-supplies-and-services-418014252/](https://www.linkedin.com/in/santeco-construction-supplies-and-services-418014252/)





Enhance the aesthetics and functionality of your space with our premium tiles and wood claddings. Our tiles are crafted with precision, offering a wide range of colors, patterns, and textures to suit any style or design preference. Whether you're looking to add a modern flair or a rustic charm, our wood claddings provide warmth and character to any room. With durable materials and easy installation, our products are designed to withstand the test of time while elevating the look and feel of your space. Explore our collection today and transform your surroundings with elegance and sophistication.

# Tiles



**HMD-604**

**SPECIFICATION:** GLAZED  
PORCELAIN  
**SIZE:** 60X60 CM



**HS7083**

**SPECIFICATIONS:** MADERA GLAZED  
CERAMIC  
**SIZE:** 60X60 CM



**HS7084**

**SPECIFICATIONS:** MADERA GLAZED  
CERAMIC  
**SIZE:** 60X60 CM



**HS7085**

**SPECIFICATIONS:** MADERA GLAZED  
CERAMIC  
**SIZE:** 60X60 CM



**HS7086**

**SPECIFICATIONS:** MADERA GLAZED  
CERAMIC  
**SIZE:** 60X60 CM



**HS7087**

**SPECIFICATIONS:** MADERA GLAZED  
CERAMIC  
**SIZE:** 60X60 CM



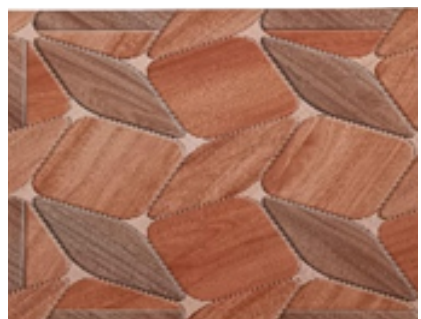
**HS7123**

**SPECIFICATIONS:** MADERA GLAZED  
CERAMIC  
**SIZE:** 60X60 CM



**HS7124**

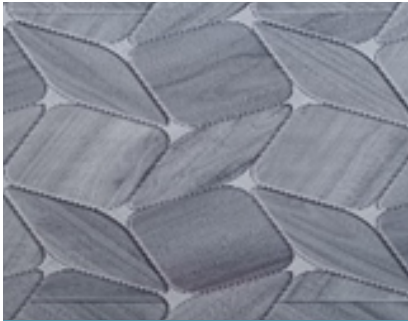
**SPECIFICATIONS:** MADERA GLAZED  
CERAMIC  
**SIZE:** 60X60 CM



**HS7127**

**SPECIFICATIONS:** MADERA GLAZED  
CERAMIC  
**SIZE:** 60X60 CM

# Tiles



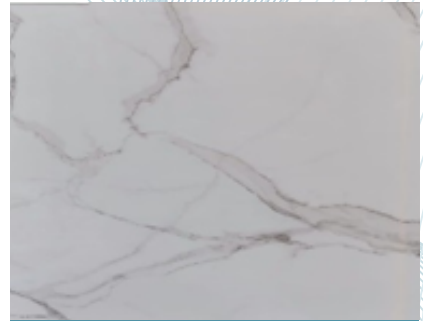
**HS7128**

**SPECIFICATION:** MADERA GLAZED  
CERAMIC  
**SIZE:** 60X60 CM



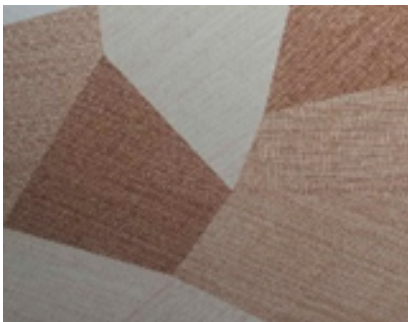
**HS7309**

**SPECIFICATIONS:** MADERA GLAZED  
CERAMIC  
**SIZE:** 60X60 CM



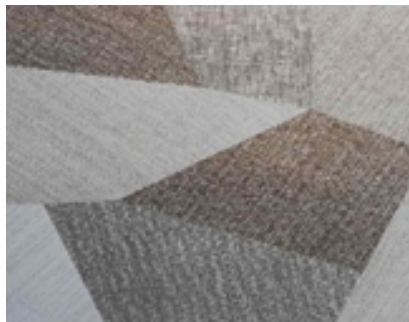
**HS7506**

**SPECIFICATIONS:** MADERA GLAZED  
CERAMIC  
**SIZE:** 60X60 CM



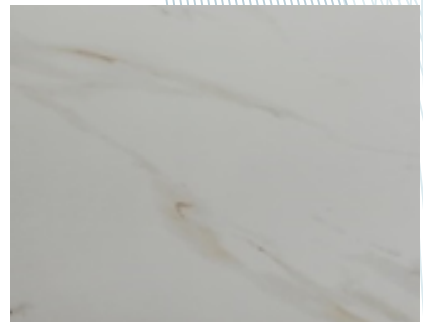
**HS8026 / D6051**

**SPECIFICATIONS:** GLAZED  
PORCELAIN  
**SIZE:** 60X60 CM



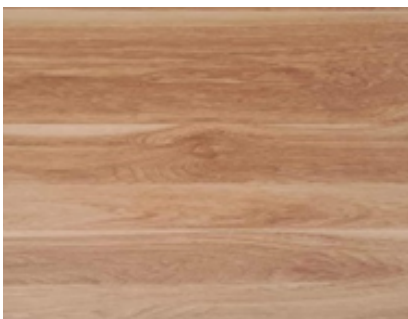
**HS8027 / D6049**

**SPECIFICATIONS:** GLAZED  
PORCELAIN  
**SIZE:** 60X60 CM



**HS8034**

**SPECIFICATIONS:** GLAZED  
PORCELAIN  
**SIZE:** 60X60 CM



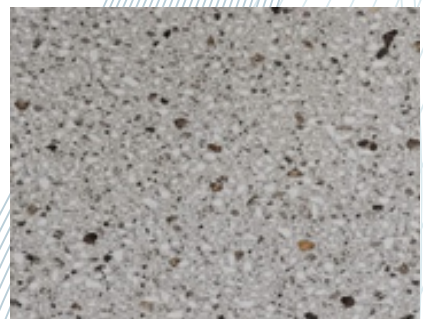
**HS8071**

**SPECIFICATIONS:** GLAZED  
PORCELAIN  
**SIZE:** 60X60 CM



**HS8111**

**SPECIFICATIONS:** GLAZED  
PORCELAIN  
**SIZE:** 60X60 CM



**HS8114**

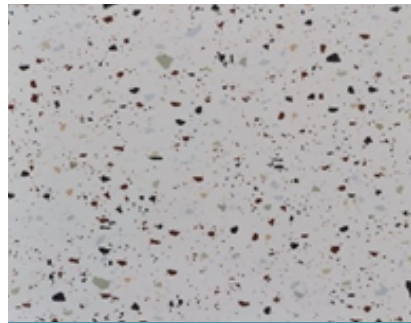
**SPECIFICATIONS:** GLAZED  
PORCELAIN  
**SIZE:** 60X60 CM

# Tiles



**HS8115**

**SPECIFICATION:** GLAZED  
PORCELAIN  
**SIZE:** 60X60 CM



**HS8129**

**SPECIFICATIONS:** GLAZED  
PORCELAIN  
**SIZE:** 60X60 CM



**HS8130**

**SPECIFICATIONS:** GLAZED  
PORCELAIN  
**SIZE:** 60X60 CM



**HS8131**

**SPECIFICATIONS:** GLAZED  
PORCELAIN  
**SIZE:** 60X60 CM



**HS8161**

**SPECIFICATIONS:** GLAZED  
PORCELAIN  
**SIZE:** 60X60 CM



**HS8182**

**SPECIFICATIONS:** GLAZED  
PORCELAIN  
**SIZE:** 60X60 CM



**HS8189**

**SPECIFICATIONS:** GLAZED  
PORCELAIN  
**SIZE:** 60X60 CM



**HS8190**

**SPECIFICATIONS:** GLAZED  
PORCELAIN  
**SIZE:** 60X60 CM



**HS8193**

**SPECIFICATIONS:** GLAZED  
PORCELAIN  
**SIZE:** 60X60 CM

# Tiles



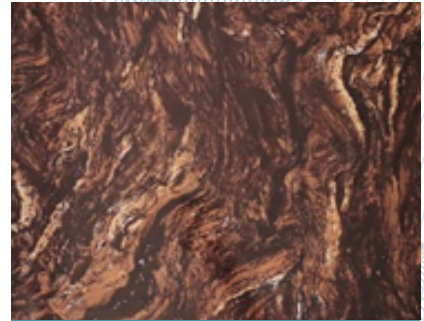
**HS8192**

**SPECIFICATION:** GLAZED  
PORCELAIN  
**SIZE:** 60X60 CM



**HSD204**

**SPECIFICATIONS:** GLAZED  
PORCELAIN  
**SIZE:** 60X60 CM



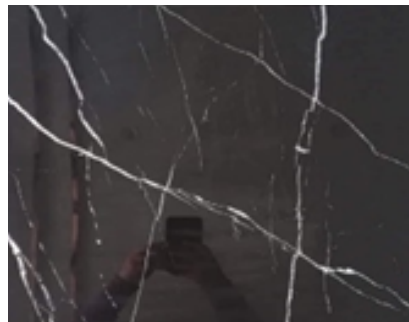
**HSD609**

**SPECIFICATIONS:** GLAZED  
PORCELAIN  
**SIZE:** 60X60 CM



**HSD610**

**SPECIFICATIONS:** GLAZED  
PORCELAIN  
**SIZE:** 60X60 CM



**HSD611**

**SPECIFICATIONS:** GLAZED  
PORCELAIN  
**SIZE:** 60X60 CM



**HSD616**

**SPECIFICATIONS:** GLAZED  
PORCELAIN  
**SIZE:** 60X60 CM



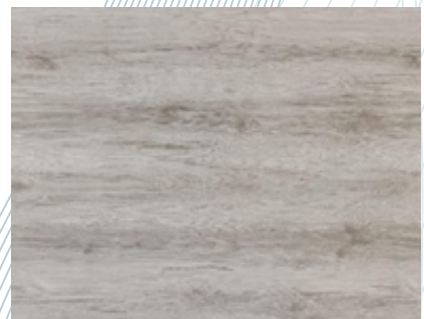
**K600**

**SPECIFICATIONS:** PLAINWHITE  
RUSTIC PORCELAIN  
**SIZE:** 60X60 CM



**K601**

**SPECIFICATIONS:** MATTE WHITE  
**SIZE:** 60X60 CM

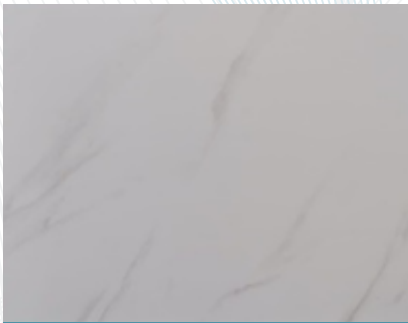


**K605**

**SPECIFICATIONS:** RUSTIC  
PORCELAIN  
**SIZE:** 60X60 CM

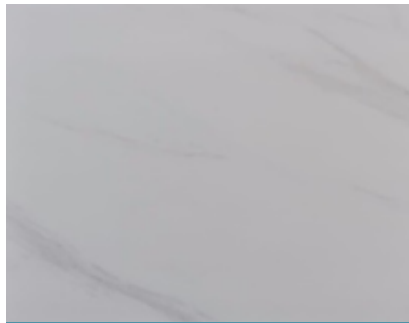
# Tiles

---



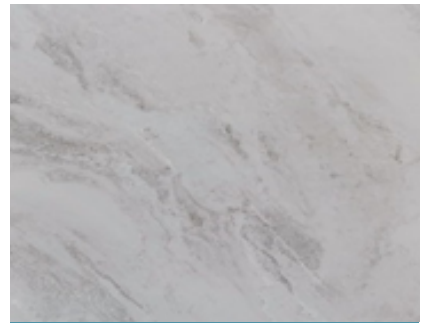
**K606**

**SPECIFICATION:** RUSTIC  
PORCELAIN  
**SIZE:** 60X60 CM



**K607**

**SPECIFICATIONS:** RUSTIC  
PORCELAIN  
**SIZE:** 60X60 CM



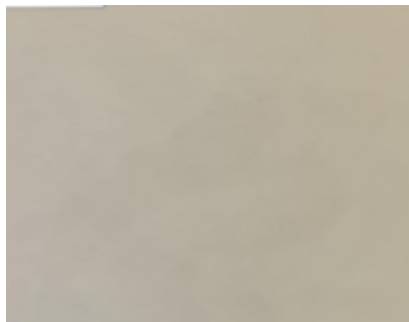
**K609**

**SPECIFICATIONS:** RUSTIC  
PORCELAIN  
**SIZE:** 60X60 CM



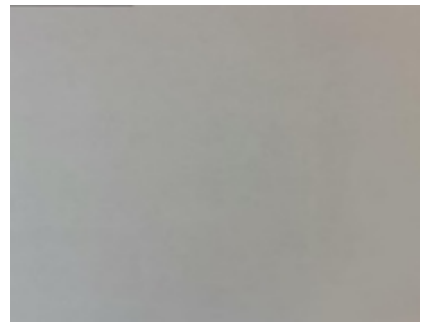
**K610**

**SPECIFICATIONS:** RUSTIC  
PORCELAIN  
**SIZE:** 60X60 CM



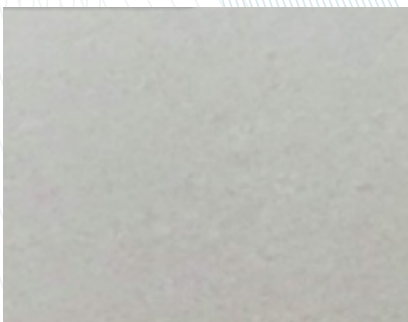
**PP6001**

**SPECIFICATIONS:** RUSTIC  
PORCELAIN-IVORY SHADE  
**SIZE:** 60X60 CM



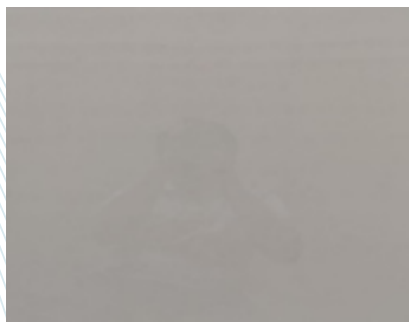
**PP6002**

**SPECIFICATIONS:** RUSTIC  
PORCELAIN-DARKGRAY SHADE  
**SIZE:** 60X60 CM



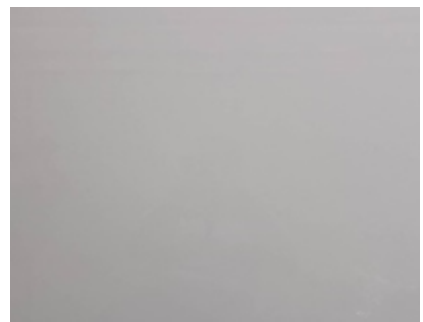
**HS6POI**

**SPECIFICATIONS:** DOUBLE  
LOADING JENNICA WHITE  
**SIZE:** 60X60 CM



**HS-8777**

**SPECIFICATIONS:** DOUBLE  
LOADING  
**SIZE:** 60X60 CM



**HSB606**

**SPECIFICATIONS:** SUPER WHITE  
**SIZE:** 60X60 CM



# Tiles



**RHS-3601**

**SPECIFICATION:** RED BODY  
GLOSSY  
**SIZE:** 30X60 CM



**RHS-3607**

**SPECIFICATIONS:** RED BODY  
GLOSSY  
**SIZE:** 30X60 CM



**RHS-3616**

**SPECIFICATIONS:** RED BODY  
GLOSSY  
**SIZE:** 30X60 CM



**RHS-3610**

**SPECIFICATIONS:** RED BODY  
GLOSSY  
**SIZE:** 30X60 CM



**RHS-3614**

**SPECIFICATIONS:** RED BODY  
GLOSSY  
**SIZE:** 30X60 CM



**RHS-3623**

**SPECIFICATIONS:** GLOSSY RED  
BODY  
**SIZE:** 30X60 CM



**RHS-3624**

**SPECIFICATIONS:** GLOSSY RED  
BODY  
**SIZE:** 30X60 CM



**RHS-3628**

**SPECIFICATIONS:** GLOSSY RED  
BODY  
**SIZE:** 30X60 CM



**RHS-3621**

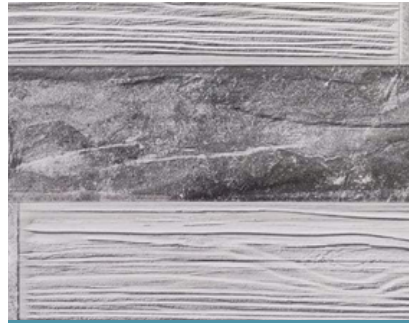
**SPECIFICATIONS:** GLOSSY RED  
BODY  
**SIZE:** 60X60 CM

# Tiles



**RHS-3617**

**SPECIFICATION:** RED BODY  
GLOSSY  
**SIZE:** 30X60 CM



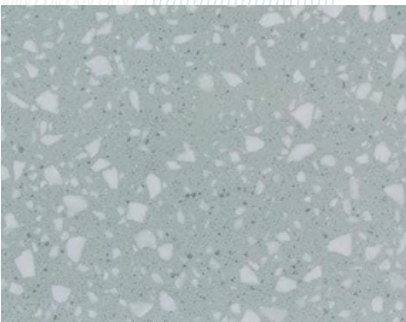
**RHS-3629**

**SPECIFICATIONS:** RUSTIC RED  
BODY  
**SIZE:** 30X60 CM



**RHS-3626**

**SPECIFICATIONS:** GLOSSY RED  
BODY  
**SIZE:** 30X60 CM



**HY36108**

**SPECIFICATIONS:** GLOSSY  
CERAMIC  
**SIZE:** 30X60 CM



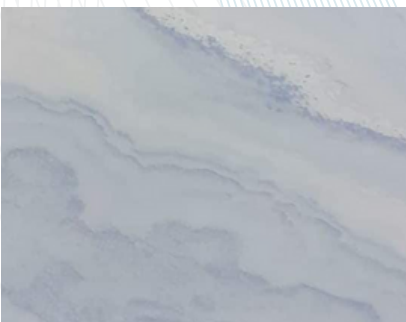
**HY3631**

**SPECIFICATIONS:** GLOSSY  
CERAMIC  
**SIZE:** 30X60 CM



**HY3697**

**SPECIFICATIONS:** GLOSSY  
CERAMIC  
**SIZE:** 30X60 CM



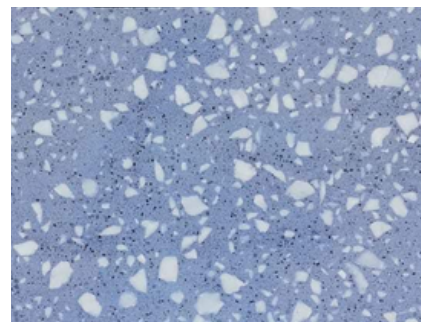
**HY3675**

**SPECIFICATIONS:** GLOSSY  
CERAMIC  
**SIZE:** 30X60 CM



**HY36103**

**SPECIFICATIONS:** GLOSSY  
CERAMIC  
**SIZE:** 30X60 CM



**HY36109**

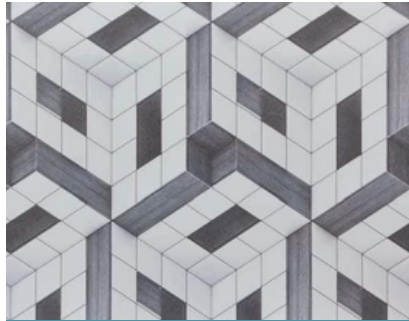
**SPECIFICATIONS:** GLOSSY  
CERAMIC  
**SIZE:** 60X60 CM

# Tiles



**HY3696**

**SPECIFICATION:** GLOSSY CERAMIC  
**SIZE:** 30X60 CM



**HY3687**

**SPECIFICATIONS:** GLOSSY  
CERAMIC  
**SIZE:** 30X60 CM



**HY3677**

**SPECIFICATIONS:** GLOSSY  
CERAMIC  
**SIZE:** 30X60 CM



**HY3674**

**SPECIFICATIONS:** GLOSSY  
CERAMIC  
**SIZE:** 30X60 CM



**HY3694**

**SPECIFICATIONS:** GLOSSY  
CERAMIC  
**SIZE:** 30X60 CM



**HY36101**

**SPECIFICATIONS:** GLOSSY  
CERAMIC  
**SIZE:** 30X60 CM



**HY3696**

**SPECIFICATIONS:** GLOSSY  
CERAMIC  
**SIZE:** 30X60 CM

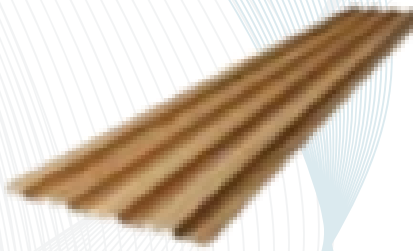


**HY3691**

**SPECIFICATIONS:** GLOSSY  
CERAMIC  
**SIZE:** 30X60 CM

# PVC WALL PANELS

---



**GM-05**

**SPECIFICATION:** RUSSIAN OLIVE  
**SIZE:** 160MM X 24MM X 2.9M



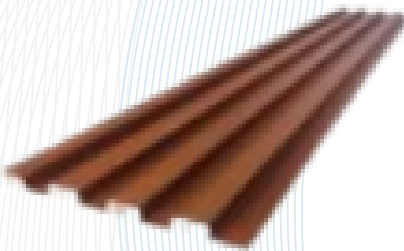
**GM-06**

**SPECIFICATIONS:** RED WOOD  
**SIZE:** 160MM X 24MM X 2.9M



**GM-10**

**SPECIFICATIONS:** WENGE  
**SIZE:** 160MM X 24MM X 2.9M



**GM-25**

**SPECIFICATIONS:** WALNUT  
**SIZE:** 160MM X 24MM X 2.9M



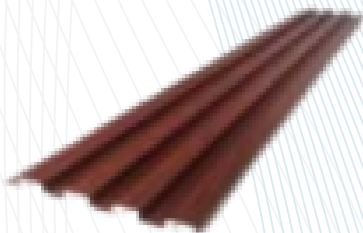
**GM-22**

**SPECIFICATIONS:** IRON GRAY  
**SIZE:** 160MM X 24MM X 2.9M



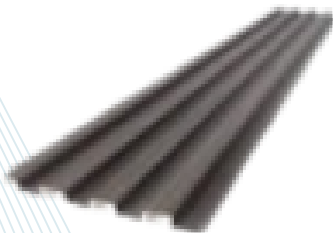
**GM-23**

**SPECIFICATIONS:** YELLOW PINE  
**SIZE:** 160MM X 24MM X 2.9M



**GM-15**

**SPECIFICATIONS:** MAHOGANY  
**SIZE:** 160MM X 24MM X 2.9M



**GM-27**

**SPECIFICATIONS:** WOOD GRAY  
**SIZE:** 160MM X 24MM X 2.9M

# PVC COLUMN

---



## GM-042

**SPECIFICATION:** INDOOR SERIES  
WOOD PLASTIC COMPOSITE  
(WPC) - COLUMNS  
**SIZE:** 50 X 50 X 2900 MM



## GM-024

**SPECIFICATIONS:** INDOOR SERIES  
WOOD PLASTIC COMPOSITE  
(WPC) - COLUMNS  
**SIZE:** 50 X 50 X 2900 MM



## GM-008

**SPECIFICATIONS:** INDOOR SERIES  
WOOD PLASTIC COMPOSITE  
(WPC) - COLUMNS  
**SIZE:** 50 X 50 X 2900 MM



## GM-030

**SPECIFICATION:** INDOOR SERIES  
WOOD PLASTIC COMPOSITE  
(WPC) - COLUMNS  
**SIZE:** 50 X 50 X 2900 MM



## GM-004

**SPECIFICATIONS:** INDOOR SERIES  
WOOD PLASTIC COMPOSITE  
(WPC) - COLUMNS  
**SIZE:** 50 X 50 X 2900 MM



## GM-010

**SPECIFICATIONS:** WENGE  
**SIZE:** 30 X 40 X 2900 MM

# PVC ANGLE EDGING

---



**SANTECO CONSTRUCTION**  
Supplies and Services



**MANILA OFFICE**

**#81 Unit A, F. Balagtas St., Parang, Marikina City, 1809  
(02) 7956-5078 / (02) 7900-0847  
info@santecoconstruction.net  
michaeldsanteco@gmail.com**

**<https://www.santecoconstruction.net/>  
<https://www.facebook.com/santeco.construction>  
<https://www.instagram.com/santeco.construction>**

ALL SPECIFICATIONS ARE SUBJECT TO CHANGE WITHOUT NOTICE  
COPYRIGHT©2023 SANTECO CONSTRUCTION SUPPLIES AND SERVICES